



arina
energy

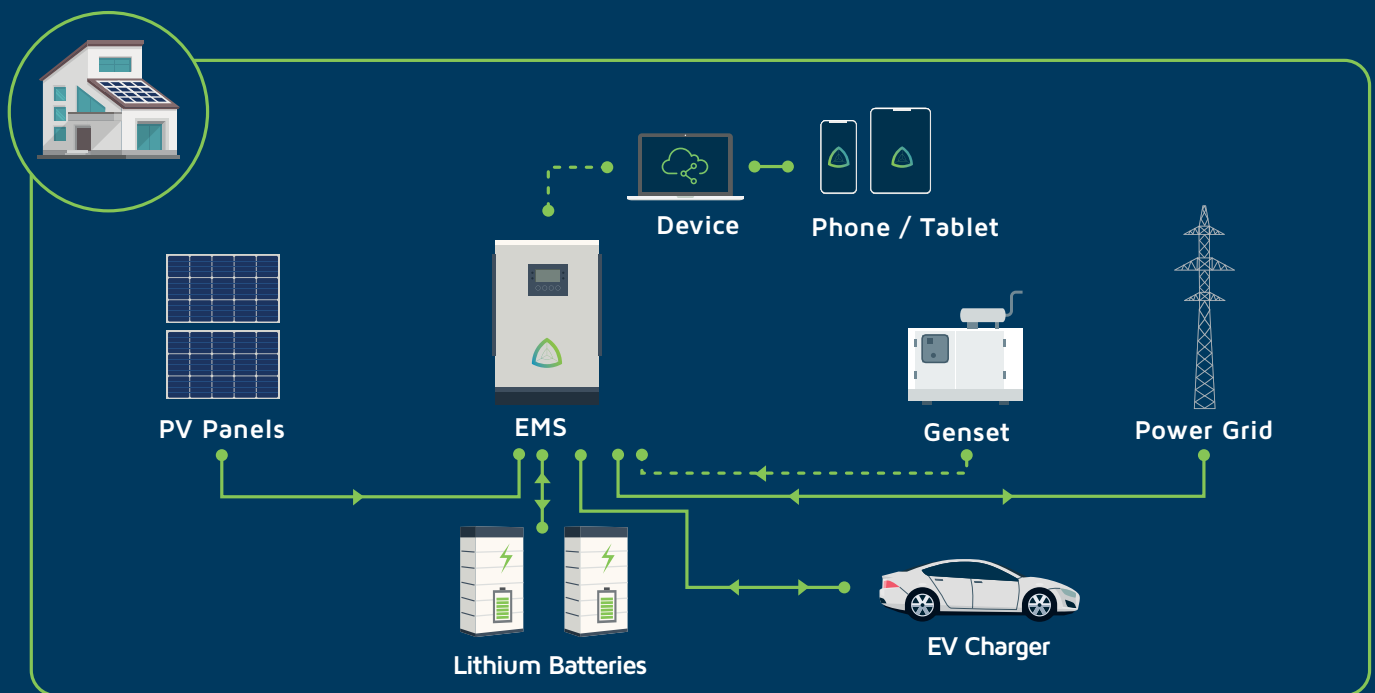
Residential Solution

CLEAN. SAFE. RENEWABLE.



www.arinaenergy.com

HOW THE SYSTEM WORKS



OUR LITHIUM-ION POWERED SOLUTION

At Arina, it has always been about renewable energies and the best of them. We use Lithium-ion batteries because they have a longer lifespan and yield a better performance.

Criteria	Lithium Ion	Lead Acid
Expected lifespan	6,000 cycles	2,500 cycles
Depth of discharge	90%	50%
Standard warranty	6 years	1 year
Initial budget / usable kWh	260 USD	110 USD
Expected lifespan (years)	10 years	2 years
Budget over 10 years / usable kWh	260 USD	550 USD

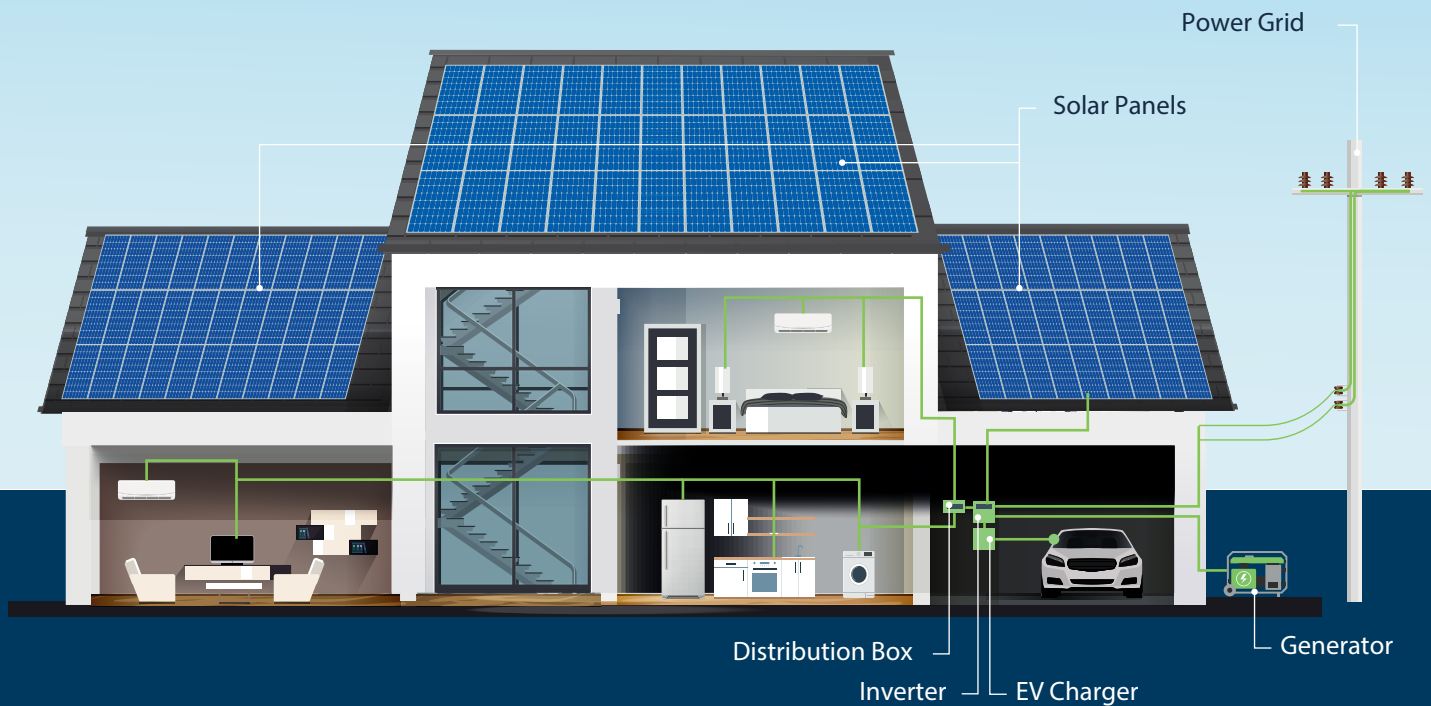
INTERACTIVE END-USER INTERFACE

Energy Management System is an online platform developed and maintained by the Arina energy team. The platform provides data monitoring, remote control, and energy management.



- ✓ User friendly
- ✓ Mobile platform
- ✓ Remote access

SYSTEM OUTPUT



Arina Energy provides scalable solutions to residential needs in both single and three-phase models with integrated energy storage solutions.

	Single Phase Solution	Three Phase Solution
5 Amps	6 to 26 Hrs	12 to 64 Hrs
10 Amps	3 to 13 Hrs	6 to 32 Hrs
15 Amps	2 to 8 Hrs	4 to 21 Hrs
20 Amps	1 to 6 Hrs	3 to 16 Hrs
25 Amps	1 to 5 Hrs	2 to 13 Hrs
35 Amps		2 to 9 Hrs
45 amps		1 to 7 Hrs
# of Panels	5 to 23	10 to 56
# of batteries	3 to 9	5 to 22

TECHNICAL DATA

	Single Phase ARS5S14	Three Phase ARS10T25
Solar input		
Number of Panels	10	18
Maximum DC Power (W)	6000	8000
Maximum DC Voltage (V)	600	1000
Maximum Input Current per String (A)	12	12
Maximum Short Circuit Current per String (A)	14	14
MPPT Voltage Range (V)	125 - 550	180 - 950
MPPT Voltage Range at Full Load (V)	217 - 500	330 - 800
MPPT Inputs	2	2
AC		
Nominal Power (VA)	5000	10000
Maximum Power (VA)	5500	11000
Nominal Voltage (V)	230	400 / 230
Nominal Frequency (Hz)	50	50
Maximum Input Current (A)	21.7	16 * 3
Maximum Output Current (A)	23.9	15.9 * 3
Off-Grid Nominal Output Power (VA)	5000	10000
Off-Grid Peak Output Power (W)	8000, 10s	15000, 60s
Battery		
Battery System Voltage (V)	48	48
Number of Cascaded Modules	4	7
Max Charge / Discharge Current (A)	20	25
Total Capacity (KWh)	14.21	24.86
Depth of Discharge (%)	90	90
General Data		
Dimensions	TBD	TBD
Weight	TBD	TBD
Ingress Protection	Indoor Rated	Indoor Rated
Cooling	Natural	Natural
Communication	Modbus, Ethernet	Modbus, Ethernet
Safety Features	Anti-Islanding, Residual Current, Insulation Resistance, DC Reversed Polarity, Output Over Current, Output Over Voltage, Surge Protection, Over Heat Protection	